

# Country View

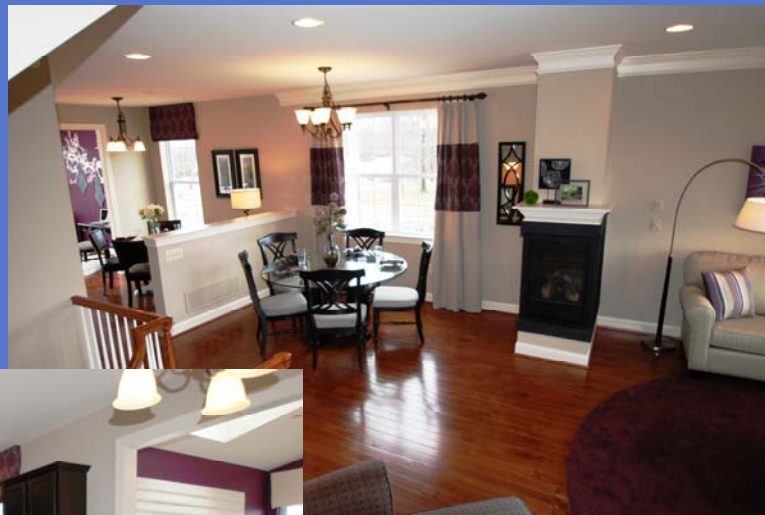
## Quick Delivery Baldwin Model



*Picture depicts model not actual home.*

~ Lot #14, 134 Country View Way ~  
Great Location Backs to Open Space!

Sales Center 215.257.6009  
[www.villagesatcountryview.com](http://www.villagesatcountryview.com)



*Pictures depict model home not actual home.*

- ◆ Spacious Baldwin Model featuring nearly 2,000 square feet of finished living space
- ◆ Covered Front Entry to the warm welcome of the Foyer with Hardwood Flooring
- ◆ Gourmet Kitchen featuring **Center Island Cabinet, Stainless Steel Appliances and sink, Water Supply Line** for a refrigerator and Separate Breakfast Nook for Informal Dining
- ◆ Open Formal Living and Dining Rooms ideal for guest entertaining.
- ◆ **Enlarged Rear Deck** for outdoor entertaining and relaxing
- ◆ Finished Flex Room offers many possibilities ~ Den, Exercise Room, In-Home Office or Hobby Room
- ◆ Retreat to the Owner's Suite complimented with Tray Ceiling, large Walk-In Closet and Owner's Bath featuring cathedral ceiling, ceramic tile floor, double bowl vanity and stall shower with seat
- ◆ This floor also features a convenient laundry room, 2 secondary bedrooms and hall bath
- ◆ W.B. Homes Trademark Amenities and Millwork package and 2 car garage with Carriage Style Door
- ◆ Additionally this Home Includes the Following Features and Upgrades: **Custom Lighting Package** and **Custom Paint Package** throughout the home

**\*\*Incentives Good Only when Buyers utilize North Penn Abstract for Title Services\*\***

**Exceptional Value of \$242,211**

**COLDWELL  
BANKER**

**PREMIER PROPERTIES** MAIN OFFICE 215.699.9000  
*"The Competitive Edge"* [www.cbpremierproperties.com](http://www.cbpremierproperties.com)

**w.b. HOMES, INC.**  
*Building Your Neighborhood, One Home at a Time*

*Information on this brochure is deemed reliable, however is subject to errors, omissions, and changes without prior notice.*